

QSS-3101

HIGH PERFORMANCE FULLY DIGITAL MINILAB



HIGH PER
HIGH PER
HIGH PER
HIGH PER
HIGH PER
HIGH PERFORMANCE
HIGH PERFORMANCE
HIGH PERFORMANCE
HIGH PERFORMANCE
HIGH PERFORMANCE
HIGH PERFORMANCE
HIGH PERFORMANCE



NORITSU

HIGH PERFORMANCE

The QSS-3101 Digital is a highly productive minilab, with a superior work flow provided by fully digital operations, and system components that employ state-of-the-art technology.

HIGH QUALITY LASER EXPOSURE SYSTEM

A revolutionary, newly developed laser technology is employed in the exposure system of the QSS-3101 Digital, enabling high quality prints of 320dpi to be output onto both standard and digital paper.

HIGH CAPACITY

From scanning to printing, all operations are fully digital. The utilization of a high-speed, detached scanner, laser print engine, and numerous speed-enhancing features enable the QSS-3101 Digital to produce up to approximately 2,350 5"x3.5" prints per hour. High quality enlargements up to 12"x 18" can be produced as well as other additional value print such as greeting cards, calendar prints, ID photos, business cards and package prints.



SIMPLE USER INTERFACE

Our easy-to-understand graphic user interface simplifies the printing process so that even operators with limited experience are able to produce a wide range of prints. Icons representing the actual input/output media are displayed on the screen of the QSS-3101 Digital allowing you to check the progress of your orders by simply glancing at the main menu.

EASY MAINTENANCE & BUILT-IN MANUAL

The QSS-3101 Digital reduces the time required for daily setup. Convenient features such as automatic water replenishment and automatic washing of the turn racks, reduce the operators workload. In addition, the QSS-3101 Digital features an electronic operators manual which makes for simple diagnosis when a system error occurs. Simply press the "Help" button and the QSS-3101 Digital responds with easy to understand instructions on how to deal with the specific error.



OPTIONS

User-friendly options that support a fully digital minilab system.

LONG ROLL FEEDER

One roll of film holds up to 100 orders of 24 exposure film, and up to 70 orders of 36 exposure film. The operator simply inserts the leader, and scanning and printing are carried out automatically.



FILM SET FEEDER

While one strip of film is being scanned, the next strip is pre-set for scanning. This increases the efficiency of scanning strip film.



FILM SLEEVER

Add this sleever for fully automatic operation from scanning to inserting the negatives and positives into sleeves. The film does not need to be notched.



IX240 AUTO SUPPLIER

Automatically sets the next IX240 cartridge for processing. Enabling continuous processing of IX240 film in batches of 5 or 10 rolls.



HIGH PERFORMANCE FULLY DIGITAL MINILAB

MULTIPLE ALTERNATIVES FOR INPUT/OUTPUT

The QSS-3101 Digital supports an impressive array of input/output media and services.



NETWORKING ABILITY

The implementation of a Noritsu network system enables you to increase production and efficiency in the printing process.

The size and specifications of this network can be adapted to meet the demands of today's photo imaging operation.



CT-1 CONSUMER

The CT-1, or Consumer Terminal, is a touch screen computer terminal that allows consumers to request a wide variety of photographic products from digital media. Using a simple LAN connection, the CT-1 can be directly connected to the QSS-3101 Digital. Since the CT-1 allows the customer to enter their order information themselves, this saves time and makes the order taking process much easier for the photo lab employees. The operator work load is reduced and the customer's digital media is handled strictly by the consumer.

QSS PRINTER DRIVER (FUTURE OPTION)

A printer driver will be made available to further increase the ability of this network system. This printer driver will enable you to fulfill orders for prints from files created in Photoshop, PowerPoint, or other application software.

CD-R WRITER (FUTURE OPTION)

With the combination of a QSS-3101 Digital and a CD-R writer, film images can be digitized and written to a CD-R. An advantage to this CD-R writer is that you can perform CD-R writing during the D&P process, without affecting the D&P processing capacity. Thumbnail images can be printed on the face of the CD-R, providing an index that can be viewed simply by glancing at the CD.

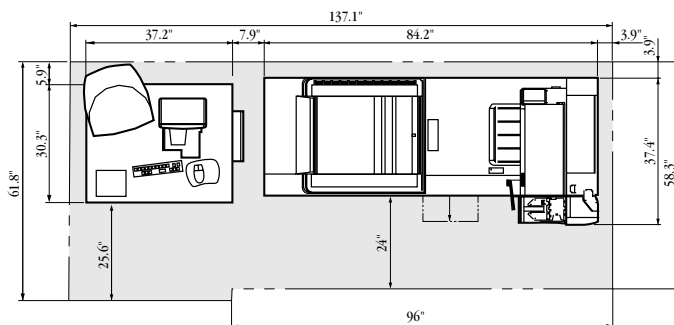
QSS-3101 DIGITAL SPECIFICATIONS

QSS-3101 DIGITAL SPECIFICATIONS	
EXPOSURE SYSTEM:	LASER SCANNING EXPOSURE BY PAPER MOVEMENT
FILM FORMATS:	110, 135F, 135H, 135P, 135HD, IX240 (C.H.P.), 120 (6x4.5, 6x6, 6x7, 6x8, 6x9)
COMPATIBLE INPUT MEDIA:	STANDARD: FD, CD-ROM, CD-R/W OPTIONAL: MO, ZIP, DVD-RAM, DVD-R, DVD-ROM, PC CARD, COMPACT FLASH, SMART MEDIA, PRINTS (FROM FLATBED SCANNER)
COMPATIBLE OUTPUT MEDIA:	STANDARD: FD OPTIONAL: CD-R/W, MO, ZIP, DVD-RAM, PC CARD, COMPACT FLASH, SMART MEDIA
PRINT RESOLUTION:	320DPI
DIMENSIONS:	L: 84.2" W: 37.4" H: 53.1" FILM SCANNER: L: 37.2" W: 30.3" H: 50.6"
OPERATIONAL WEIGHT:	2,316.7 LBS. FILM SCANNER: 502.9 LBS.
TEMPERATURE:	64-86 DEGREES FAHRENHEIT
RELATIVE HUMIDITY:	30-75%
POWER REQUIREMENTS:	1ø-2W, AC 200-240V, 50/60Hz, 24-26A
DRY TO DRY TIME:	3 MIN. / 48 SEC..
PROCESSING SPEED:	91.4 IN/MIN
PAPER SUPPLY:	DUAL PAPER MAGAZINE
PAPER WIDTH:	3.25", 3.5", 4", 4.5", 4.6", 4.75", 5", 5.11", 6", 6.5", 7", 8", 8.25", 8.5", 9.4", 10", 11", 12"
PAPER FEED LENGTH:	18" MAX. / 3.25" MIN..
PAPER ROLL LENGTH:	575 FEET
MAXIMUM PRINT SIZE:	12" X 18"
DISPLAY MONITOR:	17" COLOR (VIEWING ANGLE IS ADJUSTABLE)

ESTIMATED PROCESSING CAPACITY		
	PRINT SIZE WIDTH X PAPER ADVANCE LENGTH	PROCESSING CAPACITY PRINTS/HR
135 NEGATIVE FILM (24 EXP.)	3.5" x 5"	APPROX. 2,369
	4" x 6"	APPROX. 2,125
	8" x 10"	APPROX. 488
	12" x 18"	APPROX. 228
IX240 NEGATIVE FILM (25 EXP.)	3.5" PAPER WIDTH (C.H.P. INTERMIXED)	1457
DIGITAL CAMERA (2.5 MILLION PIXELS)	3.5" x 5"	498

CALCULATED ACCORDING TO OUR CRITERIA. THE ACTUAL CAPACITY YOU ACHIEVE MAY BE DIFFERENT.

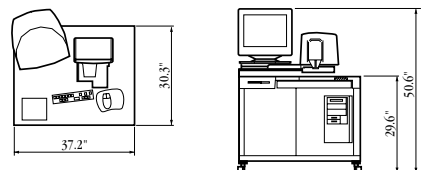
Space Required for installation (unit:inches)



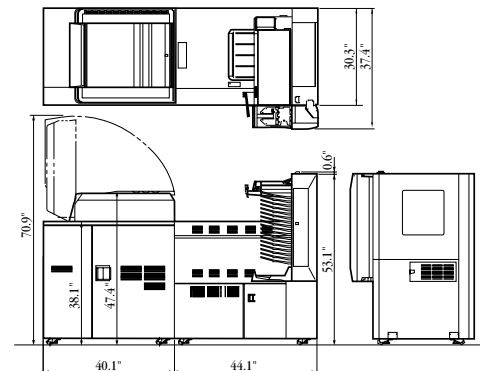
QSS-3101 DIGITAL DIAGRAMS

External view (unit:inches)

SI-2600



LP-2200/PP-1223



Specifications subject to change without notice. Printer-Paper Processor capacities are based on continuous printing of a negative under normal exposure. The capacity of the machine varies with the process chemicals used, the condition of the negatives, etc. QSS is a registered trademark of Noritsu America Corporation. QSS, INDEXPRINT™ are registered trademarks of Noritsu. Digital ICE™ is a registered trademark of Applied Science Fiction.

• **Noritsu America Corporation:** 6900 Noritsu Avenue, Buena Park, California 90620-1372 (714) 521-9040 • **Western Regional Office:** 6950 Noritsu Avenue, Buena Park, California 90620-1311 (714) 521-9040 • **Eastern Regional Office:** 336 Route 46 East, Fairfield, New Jersey 07004-2429 (973) 808-9898 • **Midwest Regional Office:** 755 Tollgate Road, Elgin, Illinois 60123-9301 (847) 888-8000 • **Southern Regional Office:** 2989 North Stemmons Freeway, Dallas, Texas 75247-6193 (214) 631-2400 • **Government Sales Office:** 8000 Towers Crescent Drive, Suite 1350, Tysons Corner, Virginia 22182-2700 (703) 821-0007 • **Subsidiary; Noritsu Canada Ltd.:** 2680 Argenta Road, Mississauga, Ontario, Canada, L5N 5V4 (905) 567-8982 • **Subsidiary; Noritsu de México S.A. de C.V.:** Plaza Mayorazgo de Luyando No. 7, Col. Xoco, Delegación Benito Juárez, C.P. 03330 México, D.F. (52) 5-601-0429



www.noritsu.com

NORITSU