

**The »4-in-1« minilab!
MSC 101.d**



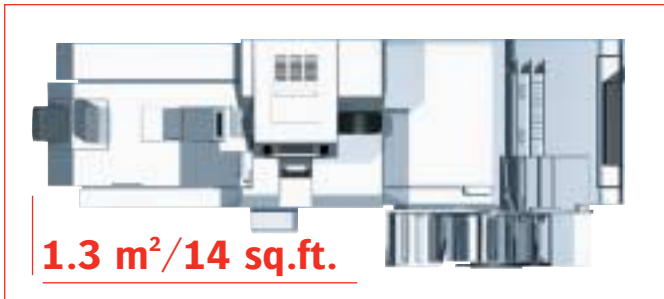
World Class Imaging Solutions



Compact, automatic, versatile – the all-rounder MSC 101.d.

How valuable is space for your business?

With its compact 1.3 m² (14 sq.ft.) footprint and user-friendly operation, the MSC 101.d is the perfect solution for boosting your profitability – today and in the future. Utilise your valuable floor space with a promising business solution that offers a substantial profit potential.



What makes a first-run print rate so special?

Agfa TFS (Total Film Scanning) technology delivers an exceptional first-run print rate, which means excellent print quality is automatic! With less paper waste and true walk-away printing.



A complete business solution – all in one unit?

The MSC 101.d “Film on CD” package is an “Enhanced 4-in-1” business solution of the future – ideal for people who want film processing, scanning, printing, and digital services all in one unit – now with CD-burning!



The versatility of the MSC 101.d lets you respond directly to your customers’ needs. Analog and digital print orders are processed conveniently. The result is a variety of outstanding print products – and it’s all automatic!

Explore the digital capabilities of the MSC 101.d.

With the MSC 101.d, you are ready to meet today's challenges and the growing demands of a rapidly changing digital world.

The Agfa FIT system combines the advantages of both analog and digital technologies into one unit. This makes it possible to process analog media like 35 mm film and digital image files from any source and print them on high-quality photographic paper.

A whole new dimension of digital input options is at your fingertips. Working in combination with the Agfa e-box digital order station you have a complete production line for digital workflow in addition to your analog workflow. This combination provides high-quality prints from digital data sources and fast processing of digital print orders.

Agfa TFS delivers outstanding print quality. It also gives you more time to serve your customers.

This pays off as it not only improves customer satisfaction, it keeps them coming back for repeat business and helps secure your future profits.



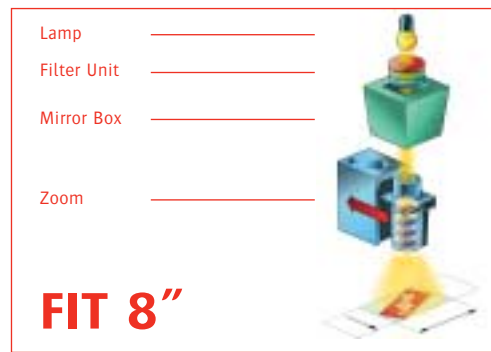
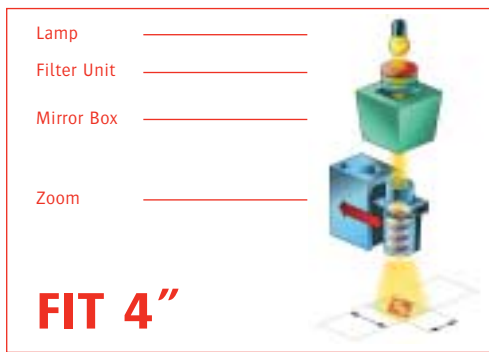
Agfa TFS helps secure your future profits!



Fit for the future.

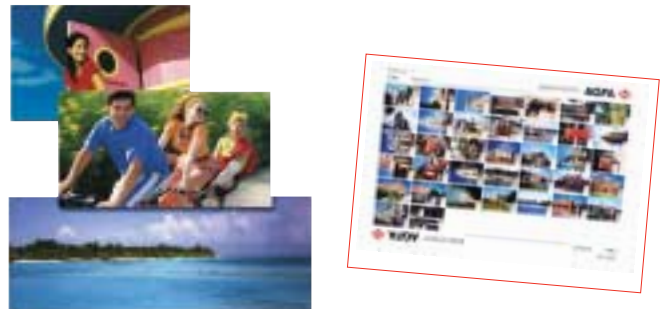
Film processor, printer (analog and digital), and paper processor are all combined into one unit (4-in-1). This advanced technology takes up only 1.3 m² (14 sq.ft.) of space.

In addition to the proven analog print system, the MSC 101.d offers a fully-integrated FIT system capable of printing digital images from virtually any source on high-quality photographic paper.



Along with the image processor and camera kit, the FIT system includes two lenses with integrated high-resolution LCDs. This makes it possible to print standard formats from digital image data or enlargements up to 8" x 10". FIT 4" is used to print up to 12 cm x 15 cm (4" x 6") images. FIT 8" is designed for 20 cm x 25 cm (8" x 10") enlargements. The individual application depends on the preferred level of throughput and print quality.

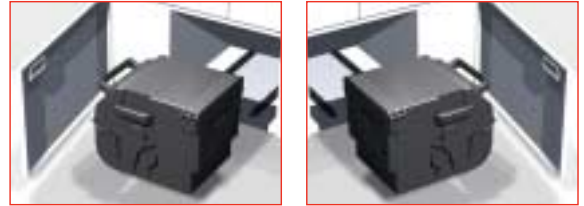
All standard film types (135, IX240, 110, 120, and 220) can be processed on the MSC 101.d. The different image formats (standard, panorama) are printed in the same print run just like the index print – automatically.



Convenience at the touch of a button.

From film processing to the final print. Initial orders from 135 film are processed automatically. The end of the film is simply attached to the leader card, placed into the film cassette, and inserted into the MSC 101.d. Everything else is done automatically.

Processing re-orders on the printer while initial orders are being developed in the film processor is as easy as pressing a button. Changing paper sizes in analog or digital print modes is just as easy. Four different print sizes are available instantly thanks to the integrated Twin Cassette system. An on-screen paper consumption indicator simplifies everyday operations.



The paper is cut from a roll before being exposed. This greatly minimises paper waste.

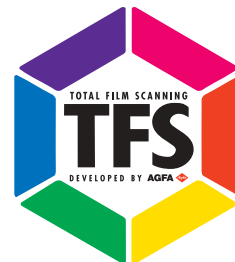
Analog and digital modes offer priority management and batch processing.

Operation is extremely easy thanks to on-screen dialogue, plain text displays, and intuitive keypad layout. A clearly identifiable key at the side of the screen is assigned for main menu functions. This helps new operators learn to process standard and special orders quickly and reduces training time to a minimum. An integrated on-screen help function guides operators through special request procedures.

Additional helpful features:

- ▶ Timer
- ▶ Automatic System Calibration (ASC) with integrated test negative, densitometer, and paper calibration management
- ▶ Automatic water evaporation balance
- ▶ Backprint options
- ▶ Integrated meters for accurate consumption control

These features combined with the proven Agfa TFS technology ensure excellent print quality automatically.



Input

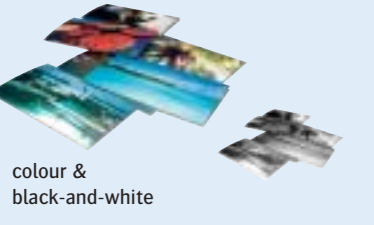
Analog

- 135 negatives
- 120/220 negatives
- APS films
- 110 negatives

Digital

- PCCard
- CD-ROM/CD-R/CD-RW
- CompactFlash Card
- SmartMedia Card
- Multimedia Card
- Sony Memory Stick
- ZIPdiskette
- Diskette

Print



Home User Software



www

Digital Order Station

1:1 Connection



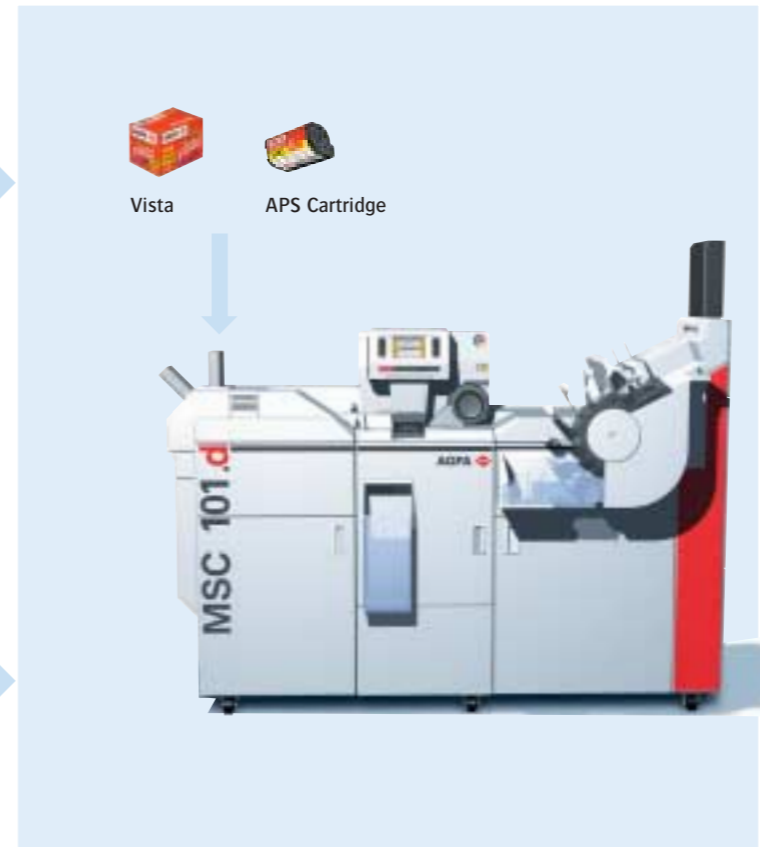
Digital Imaging Workstation

1:1 Connection



d-TFS Scanning & Printing

- Vista
- APS Cartridge



Output

Standard

- Colour & black-and-white prints up to 20 x 30 cm / 8 x 12 inches
- APS C-size
- APS H-size
- APS P-size
- Index prints

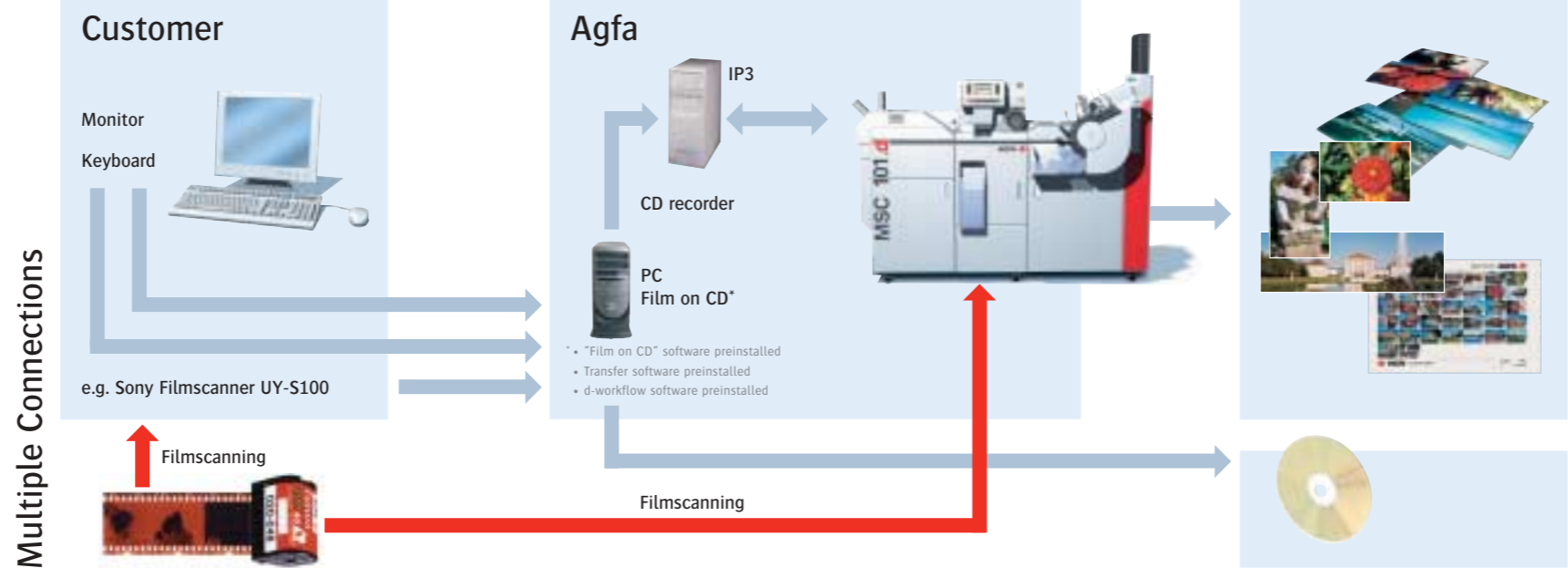
Special

- Border prints
- Prints with text
- Name cards
- Greeting cards
- Passport photos
- Package prints


Digital

- CD
- Diskette
- ZIP diskette

"Film on CD" solution



Flexible imaging technology.

	FIT 4"	FIT 8"
Lens construction (principle)	Optical axis High resolution LCD 1,024 x 1,280 pixels Plug for the electrical connection	 Condensor lens Imaging lens
Max. print format	12.5 cm x 15.5 cm/4" x 6"	20.3 cm x 25.4 cm/8" x 10"
Print formats (standard)	7 cm x 10 cm/2½" x 4" 9 cm x 13 cm/3½" x 5" 10 cm x 15 cm/4" x 6" 12 cm x 15 cm/4½" x 6" 15 cm x 25 cm/6" x 10" (jumbo index print)	13 cm x 18 cm/5" x 7" 15 cm x 20 cm/6" x 8" 20 cm x 25 cm/8" x 10" 20 cm x 25 cm/8" x 10" (jumbo index print)
Productivity based on jpg-file 500KB/10x15cm/4"x 6"	400 prints/hour	200 prints/hour
LCD resolution	1,024 x 1,280 pixels	1,024 x 1,280 pixels
Print quality	Advanced amateur level	Amateur level

Previous Agfa MSC 101 models can be upgraded to the FIT system.
 This requires a FIT 4" lens, new image processor, camera kit, and FIT conversion kit.
 A FIT 8" lens is optional.

All rights reserved. Not all features may be available at the time of product introduction. All information is subject to change.

MSC 101.d

Technical data

Film Processor	Film formats	135, IX240, 120/220, 110
	Chemicals	MSC 101 film chemicals
	Replenishing	Automatic
	Evaporation balance	Automatic
	Feed system	Leader card
	Throughput speed	65 cm/min or 26"/min
	Processing time (incl. drying)	9 min 20 sec
	Processing tanks	CD: approx. 11.4 l / BL: approx. 3.4 l / FX: approx. 2 x 2.9 l / SB: approx. 3 x 1.8 l
	Replenishing tanks	6 l per bath
	Effluent tanks	CD: 3.0 l / BL: 1.7 l / FX: 3.0 l / SB: 3.0 l
Printer Analog	Negative formats	135 (F/H/P/HV), IX240, 120 (4½ x 6 / 6 x 6 / 6 x 7 / 6 x 8 / 6 x 9), 220
	Print formats (mm/inches)	82 x 120 mm to 210 x 305 mm; panorama 89 x 254 mm and 102 x 305 mm 3" x 4½" to 8¼" x 12"; panorama 3½" x 10" and 4" x 12"
	Scanner system	Agfa Total Film Scanning TFS, true single-channel for all film brands, types, formats
	Lenses	Zoom for 135, IX240, 110 formats Variable focus lens for 120/220/IX240 film formats (optional) Optional lenses (see accessories brochure)

All rights reserved. Not all features may be available at the time of product introduction. All information is subject to change.

MSC 101.d

Technical data

Digital (FIT)	File formats	jpg, bmp
	File size	Unlimited
	Scanner	LCD
	Print formats	Max. 209 x 261 mm / 8" x 10"
Analog and Digital	Paper widths mm (inches)	82 (3 ¹ / ₄ "), 89 (3 ¹ / ₂ "), 95 (3 ³ / ₄ "), 102 (4"), 120 (4 ³ / ₄ "), 127 (5"), 152 (6"), 165 (6 ¹ / ₂ "), 178 (7"), 203 (8"), 210 (8 ¹ / ₄ ")
	Paper magazine	2 x 180 m / 2 x 590 ft
Paper Processor	Process	MSC 101 paper chemicals
	Replenishing	MSC 101 tank kit
	Evaporation balance	Automatic
	Paper feed	Sheet/roller transport, double lane transport up to paper width < 102 mm / 4"
	Throughput speed	141 cm/min or 56"/min
	Processing time (incl. drying)	3 min 39 sec
	Processing tanks	CD: approx. 9.1 l / BX: approx. 9.1 l / SB: approx. 4 x 5.3 l
	Replenishing tanks	CD: 7 l / BX: 7 l / SB: 7 l
	Effluent tanks	CD: 3.4 l / BX: 4.4 l / SB: 5.0 l

All rights reserved. Not all features may be available at the time of product introduction. All information is subject to change.

MSC 101.d

Technical data

Performance	Film processor to paper processor	Fully automatic processing 25 films (135/24)/hour for print format 10 x 15 cm / 4" x 6" Processing time from film insertion to first print: 14 min 55 sec			
	Printer/paper processor	89 mm x 127 mm 3 1/2" x 5"	750 prints/hour (effective) 910 prints/hour (multiprints)		
	Film format 135/24	102 mm x 152 mm 4" x 6"	700 prints/hour (effective) 850 prints/hour (multiprints)		
		210 mm x 305 mm 8 1/4" x 12"	27 films/hour (first copy + index print) 220 prints/hour (effective) 230 prints/hour (multiprints)		
	Film format IX240	89 mm/3 1/2" paper width 102 mm/4" paper width Digital (500 KB jpg file -> 10 x 15 cm/4" x 6") 152 mm/6" paper width	27 films/hour 26 films/hour 400 prints/hour (FIT 4")		
Miscellaneous	Dimensions (l x w x h)	207 cm x 60 cm x 181 cm / 82" x 24" x 71" (excl. sorter)			
	Required room height	195 cm / 77"			
	Weight	610 kg / 1,600 lbs (empty); 710 kg / 1,740 lbs (incl. chemicals)			
	Electrical power	1 N~:	230-240V	50/60Hz	max. 18A
		3 N~:	230/400V	50/60Hz	max. 16A
	3 ~:	208V	50/60Hz	max. 18A	
	Order code	SH30A includes: MSC 101.d basic machine, FIT package (FIT 4" and FIT 8"), Image Processor IP3, Camerakit 3, APS negative carrier, APS Cartridge feeder, Greeting card unit, X/Y mask, PC "Film on CD" and mouse including "Film on CD" software preinstalled, transfer software preinstalled, d-workflow software preinstalled			

All rights reserved. Not all features may be available at the time of product introduction. All information is subject to change.

Worldwide. Your direct connection to us.

www.agfa.com

Argentina (PY, RDU)

Agfa-Gevaert Argentina S.A.
Venezuela 4269
RA-1211 Buenos Aires
Phone: +54 11 4958-5770
Fax: +54 11 4958-2584
Internet: www.agfa.com.ar

Australia

Agfa-Gevaert Ltd.
372-394 Whitehorse Road
Nunawading, Victoria 3131, Australia
Phone: +61 3 9264-7711
Fax: +61 3 9264-7890
Internet: www.agfa.com/oceania

Austria, Region SOE

(AL, BG, BIH, CZ, H, HR, MAZ, ROM, SK, SLO, Y)
Agfa-Gevaert Ges.m.b.H.
Mariahilfer Str. 198
A-1153 Wien
Phone: +43 1 89112-0
Fax: +43 1 89112-3211
Internet: www.agfa.at

Belgium

Agfa Inc.
Agfa België N.V.
Prins Boudewijnlaan 5
B-2550 Kontich
Phone: +32 3 450-9711
Fax: +32 3 450-9776
Internet: www.agfa.be

Brasil

Agfa-Gevaert do Brasil Ltda.
Rua Alexandre Dumas, 1.711
3º andar - conj. 301
Ed. Birman 12
BR-04717-004 São Paulo SP
Phone: +55 11 5188-6500
Fax: +55 11 5188-6497
Internet: www.agfa.com.br

Canada

Agfa Inc.
77 Belfield Road
CDN-Toronto, Ontario M9W 1G6
Phone: +1 416 241-1110
Fax: +1 416 240-7354
Internet: www.agfa.ca

Chile (BOL, PE)

Agfa-Gevaert Ltda.
Avenida Santa Clara # 684 piso 4
Huechuraba
RCH-Santiago de Chile
Phone: +56 2 360-7600
Fax: +56 2 360-7642
Internet: www.agfa.cl

Croatia

Agfa-Gevaert Ges.m.b.H.
Predstavništvo u Republici Hrvatskoj
Cire Truhelke 49
HR-10000 Zagreb
Phone: +385 1 3688-277
Fax: +385 1 3688-261
Internet: www.agfa.com

Czech Republic

Agfa s.r.o.
Litvinovská 609/3
CS-190 00 Praha 9-Prosek
Phone: +420 2 66101-111
Fax: +420 2 66101-799
Internet: www.agfa.cz

Denmark

Agfa-Gevaert A/S
Farverland 4
DK-2600 Glostrup
Phone: +45 43 26-6766
Fax: +45 43 26-6705
Internet: www.agfa.dk

Finland (EST, LT, LV)

OY Agfa-Gevaert AB
Suomalaistentie 7
SF-02270 Espoo
Phone: +358 9 887-81
Fax: +358 9 887-8270
Internet: www.agfa.fi

France

Agfa-Gevaert S.A.
274-276, Avenue Napoléon Bonaparte
F-92506 Rueil Malmaison Cedex
Phone: +33 1 4732-7111
Fax: +33 1 4732-7337
Internet: www.agfa.fr

Germany

Agfa Deutschland
Vertriebsgesellschaft mbH & Cie.
Im Mediapark 5
D-50670 Köln
Phone: +49 221 5717-0
Fax: +49 221 5717-130
Internet: www.agfa.de

Great Britain

Agfa-Gevaert Ltd.
27, Great West Road
UK Brentford-Middlesex TW8 9AX
Phone: +44 20 8231 4902
Fax: +44 20 8231 4441
Internet: www.agfa.co.uk

Greece

Agfa-Gevaert A.E.B.E.
Stylianou Gonata 16
GR-12110 Peristeri
Phone: +30 10 570-6500
Fax: +30 10 570-6700
Internet: www.agfa.gr

Hong Kong (TJ)

Agfa Hong Kong Ltd.
Cavendish Centre 14th Fl.
23 Yip Hing Street
HK-Wong Chuk Hang
Phone: +852 2555-9421
Fax: +852 2873-2851
Internet: agfa.com.hk

Hungary

Agfa Hungaria Kft.
Pálya utca 4-6
H-1012 Budapest
Phone: +36 1 212 15-40
Fax: +36 1 212 15-7475
Internet: www.agfa.hu

Ireland

Agfa Ltd.
John F. Kennedy Drive
Naas Road
IRL-Dublin 12
Phone: +353 1 450-6733
Fax: +353 1 456-5267
Internet: www.agfa.com

Italy

Agfa-Gevaert S.p.A.
Via Grosio 10/4
I-20151 Milano
Phone: +39 02 3074-1
Fax: +39 02 3074-428
Internet: www.agfa.it

Japan

Agfa-Gevaert Japan, Ltd.
8-1, Higashiyama 3-chome, Meguro-ku
J-Tokyo 153-0043
Phone: +81 35 704-3071
Fax: +81 35 704-3085
Internet: www.agfa.co.jp

Mexico

Agfa de México, S.A. de C.V.
Benjamin Franklin #98
Colonia Escandon
MEX-11800 México, D.F.
Phone: +52 55 5276-7600
Fax: +52 55 5277-9635
Internet: www.agfa.com.mx

Netherlands

Agfa-Gevaert B.V.
Polakweg 10-11
NL-2288 GG Rijswijk
Phone: +31 70 4131-211
Fax: +31 70 4131-597
Internet: www.agfa.nl

New Zealand

Agfa-Gevaert NZ Ltd.
3 Argus Place
Glenfield Auckland
New Zealand
Phone: +64 9 441-8500
Fax: +64 9 441-8581
Internet: www.agfa.com/oceania

Norway

Agfa-Gevaert AS
Brennaveien 18
N-1483 Skytta
New Zealand
Phone: +47 6705-8800
Fax: +47 6705-8965
Internet: www.agfa.no

Poland

Agfa Spolka z.o.o.
AL Jerozolimskie 158
PL-02-326 Warszawa
Phone: +48 22 572-3900
Fax: +48 22 572-3965
Internet: www.agfa.com.pl

Slovakia

Agfa Slovakia s.r.o.
Hrobakova 21
SK-851 02 Bratislava
Phone: +421 2 62524-532
Fax: +421 2 62524-261
Internet: www.agfa.com

South Africa

Agfa (Pty) Ltd.
27 Wrench Road
ZA-Isando 1600
Phone: +27 11 921-5566
Fax: +27 11 921-5419
Internet: www.agfa.co.za

South Korea

Agfa Korea Ltd.
Keukdong Bldg.
Rm. 2116, 60-1, 3-ka
Chungmu-Ro, Chung-Ku
ROK-Seoul 100-705
Phone: +82 2 2262-4200
Fax: +82 2 2274-9760
Internet: www.agfa.co.kr

Sweden

Agfa-Gevaert AB
Torshamnsgatan 18
S-16493 Kista Stockholm
Phone: +46 8 793-0100
Fax: +46 8 793-0123
Internet: www.agfa.se

Switzerland

Agfa-Gevaert AG/S
Stettbachstr. 7
CH-8600 Dübendorf
Phone: +41 1 823-7111
Fax: +41 1 823-7255
Internet: www.agfa.ch

Taiwan

Agfa Taiwan Co., Ltd.
6F, 237 Sung Chiang Rd.
Taipei 104, Taiwan, R.O.C.
Phone: +886 2516-8899
Fax: +886 2516-1041
Internet: www.agfanet.com.tw

USA

Agfa Corporation
100 Challenger Road
Ridgefield Park, NJ 07660
USA
Phone: +1 201 440-2500
Fax: +1 201 440-6703
Internet: www.agfausa.com

Region Asean

(K, MAL, RI, RP, SGP, TH, VN)
Agfa-Gevaert Ltd.
Level 1, Menara Merai, Jalan 19/3
46300 Petaling Jaya
MAL-Selangor
Phone: +603 7957-4200
Fax: +603 7957-4700
Internet: www.agfa.com

Region Iberia

(E, P)
Agfa-Gevaert S.A.
Provenza, 392
E-08025 Barcelona
Phone: +34 93 476-7600
Fax: +34 93 476-7619
Internet: www.agfa.es

Region Nola

(CO, EC, YV, Central America, Caribbean)
Agfa-Gevaert de Venezuela S.A.
Avenida Principal de la Castellana
Edificio Centro Letonia
Torre ING Bank, Piso 9
Urbanizacion La Castellana
Apto. 62305 Caracas
Venezuela 1060-A
Phone: +58 212 263-6344
Fax: +58 212 263-4386
Internet: www.agfa.com

Direct Export

Agfa-Gevaert AG
Direct Export
Postfach 10 01 60
D-51301 Leverkusen
Phone: +49 214 30-1
Fax: +49 214 30-54012
Internet: www.agfa.com